

MONTHLY MEMBERSHIP PROGRESS REPORT

LOCATION MICHIGAN

District 11 A2

Results as of: 6/30/2023

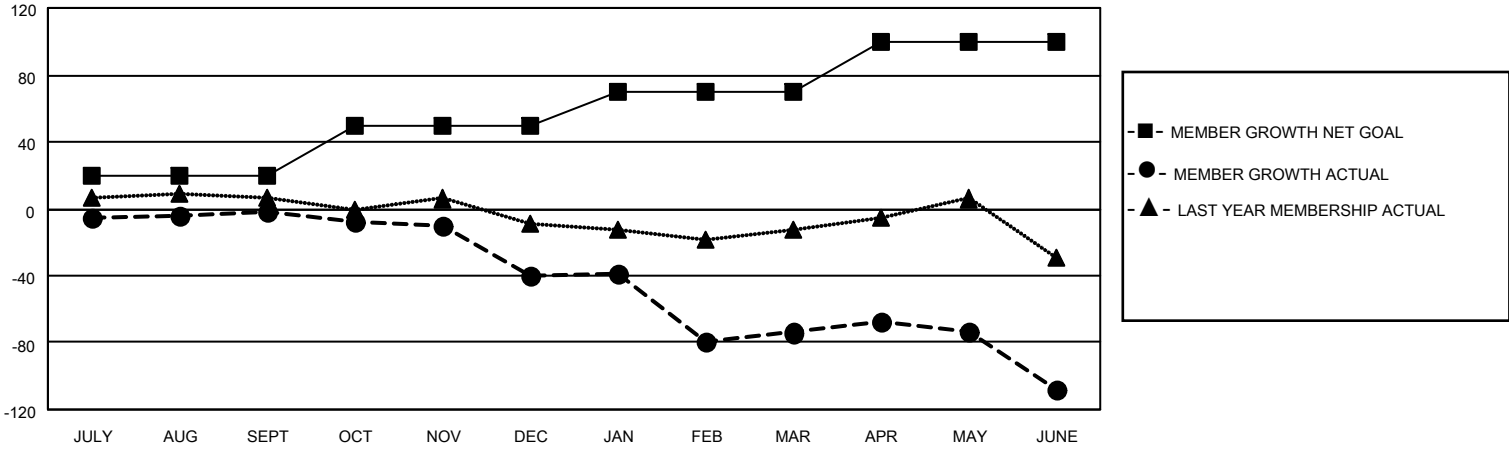
Clubs			
RESULTS FOR 2022-2023			
QUARTER	NEW CLUB GOAL	NEW CLUBS	DROPPED CLUBS
JULY/AUG/SEPT	0	0	0
OCT/NOV/DEC	0	0	0
JAN/FEB/MAR	0	0	2
APR/MAY/JUNE	0	0	3

Members			
RESULTS FOR 2022-2023			
QUARTER	MEMBER GROWTH NET GOAL	MEMBER GROWTH ACTUAL	DROPPED MEMBERS ACTUAL (including transfers)
JULY/AUG/SEPT	20	20	18
OCT/NOV/DEC	30	19	55
JAN/FEB/MAR	20	35	67
APR/MAY/JUNE	30	57	81

GOALS AND ACTUAL NEW CLUBS CUMULATIVE



GOALS AND ACTUAL MEMBERS CUMULATIVE



DROPPED CLUBS: 5	
DROPPED MEMBERS	
DECEASED	35
CLUB CANCELLED	60
OTHER	125
TOTAL	220

22 CLUBS OF 37 ADDED 1 OR MORE NEW MEMBERS

[CLICK HERE FOR CUMULATIVE MEMBERSHIP DATA](#)

<u>GENDER DISTRIBUTION</u>	
MALE	786 (63.70%)
FEMALE	448 (36.30%)
NON BINARY	0 (0.00%)
PREFER NOT TO ANSWER	0 (0.00%)
TOTAL FAMILY UNIT MEMBERS	204
FAMILY MEMBERS PAYING HALF DUES	105